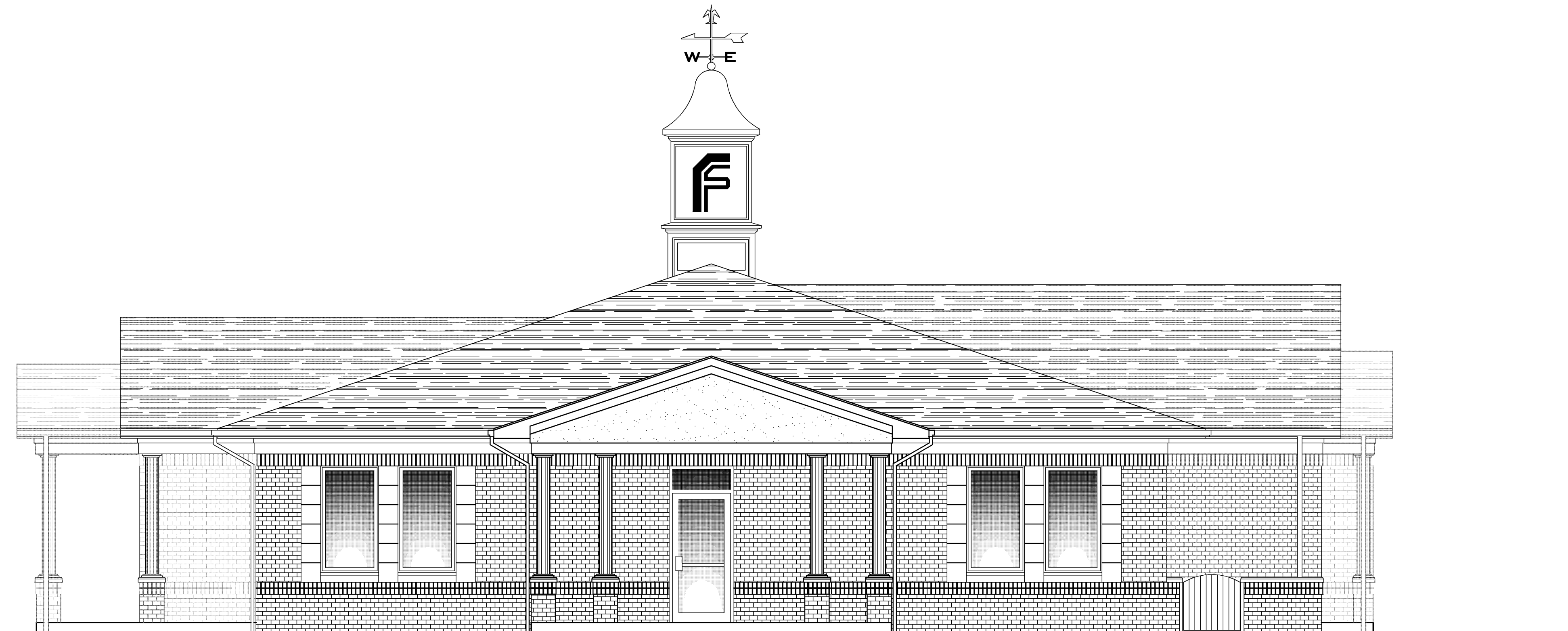




WEST ELEVATION
1/4" = 1'-0"



SOUTH ELEVATION
1/4" = 1'-0"

THESE DRAWINGS ARE THE PROPERTY OF MCCARTY ASSOCIATES, LLC AND SHALL NOT BE USED OR REPRODUCED WITHOUT WRITTEN CONSENT OF MCCARTY ASSOCIATES, LLC. © 2012 MCCARTY ASSOCIATES, LLC.

DRAWN: — CHECKED: —

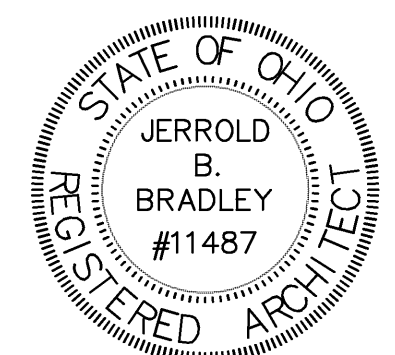
MCCARTY ASSOCIATES, LLC
ARCHITECTS — ENGINEERS — SURVEYORS
213 N. HIGH ST., HILLSBORO, OHIO 45133 PH. 937-393-9971 FAX 937-393-2480
1515 ST. RT. 28 SUITE E, LOVELAND, OHIO 45140 PH. 513-722-0900 FAX 513-722-0900
304 E. MARKET ST., WASHINGTON C.H., OHIO 43160 PH. 740-335-3816 FAX 740-335-5828
www.mccartyassociates.com

NEW BRANCH BANK OFFICE
FIRST STATE BANK
CLINTON AVE./LEESBURG AVE./DRAPER ST.
WASHINGTON COURT HOUSE, OHIO

DATE
JANUARY 2016

FAYETTE COUNTY

SCALE
NOTED



JERROLD B. BRADLEY, LICENSE NO. 11487
EXPIRATION DATE: 12/31/2013

DRAWING NUMBER
A15-782

SHEET
A2
8